

S5000 TECHNICAL BULLETIN

Date	13/10/2021
Topic	Headrest
Priority	High - Mandatory

PROBLEM:

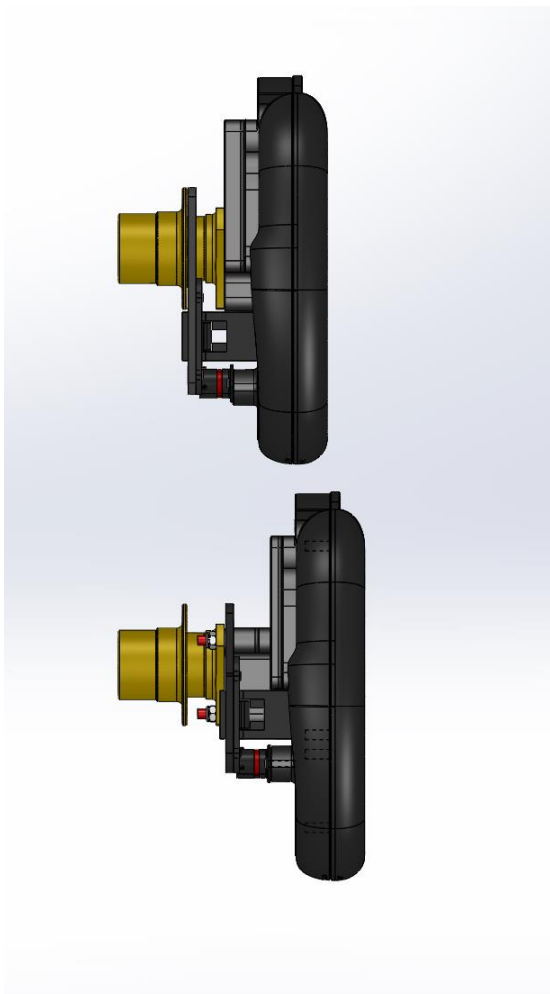
Teams have modified the headrest behind the helmet. We weren't given Motorsport Australia/FIA approval for the modification and have been told to return the headrest material around the helmet to the original design.

Clearance of the headrest around the hands and wrists were made by the individual teams and it doesn't look professional.

SOLUTION:

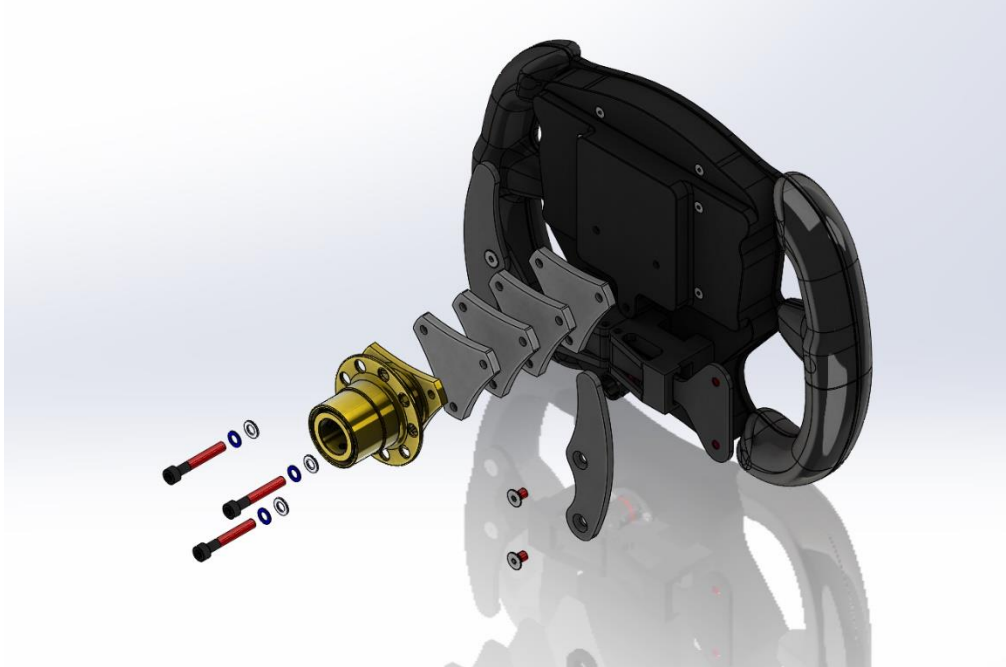
All headrests will be recalled to GRM and a Kevlar patch will be bonded in to return the back of helmet surface to the original design.

For taller drivers where space is an issue, an optional steering wheel housing (GRM-AI0512) will be available for purchase that allows for the steering wheel to be moved a maximum of 19.5mm forward and adjusted with 5mm spacers. It may be required to adjust or remake the driver's foam seat insert to push them forward.



*Important! To ensure maximum safety when installing different spacers between the steering wheel housing and the quick release adapter, following installation guide table is

Spacer	Bolt size	Note
No spacer	SHCS M5 x 16mm	Flat&Schnorr washer combo, Loctite 243
5mm spacer	SHCS M5 x 20mm	Flat&Schnorr washer combo, Loctite 243
10mm spacer	SHCS M5 x 25mm	Flat&Schnorr washer combo, Loctite 243
15mm spacer	SHCS M5 x 30mm	Flat&Schnorr washer combo, Loctite 243
20mm spacer	SHCS M5 x 35mm	Flat&Schnorr washer combo, Loctite 243



If the optional steering wheel housing is required, the steering wheel will need to be returned to GRM as disassembly and electrical connector depinning are involved.

A Kevlar patch that is shaped with a large clearance around the wrist will be bonded in to improve the appearance of the headrest.

After this work has been completed to the headrests no other modifications will be allowed.

Any questions please contact s5000@grmotorsport.com.au