

S5000 TECHNICAL BULLETIN

Date	11/10/2021
Topic	Sump Plug Access Hole
Priority	Low - Optional

PROBLEM:

When the sump plug of the gear box needs to be removed for engine oil drainage, the carbon fibre rear floor undertray blocks the drainage point (See Figure 1).

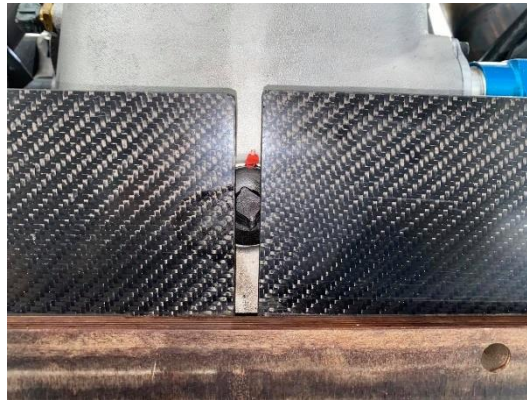


FIGURE 1. BLOCKED DRAINAGE ACCESS POINT

SOLUTION:

A hole no larger than 50mm diameter will be allowed to be cut out of the undertray to allow access to the sump plug. Simply mark out the circumference of a cylindrical object onto the undertray (Figure 2) and slowly remove the carbon fibre (circular pencil grinder was used in Figure 3).

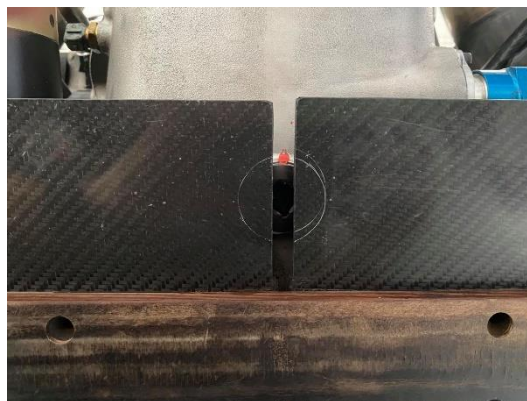


FIGURE 2. MARKED CIRCUMFERENCE



FIGURE 3. SUMP PLUG ACCESS HOLE

Any questions please contact s5000@grmotorsport.com.au